

ENGINEERING RESPONSIBILITY ☒SEPIA ☒

A-98775-66502-4

0	1	2	3	4	6	8	9	11	12	14	15
16	17	19	21	22	23	25	29	30	32	33	38
45	46	61	63						40		

SYM

REVISIONS

APPROVED

DATE

A

AS ISSUED

[Signature]

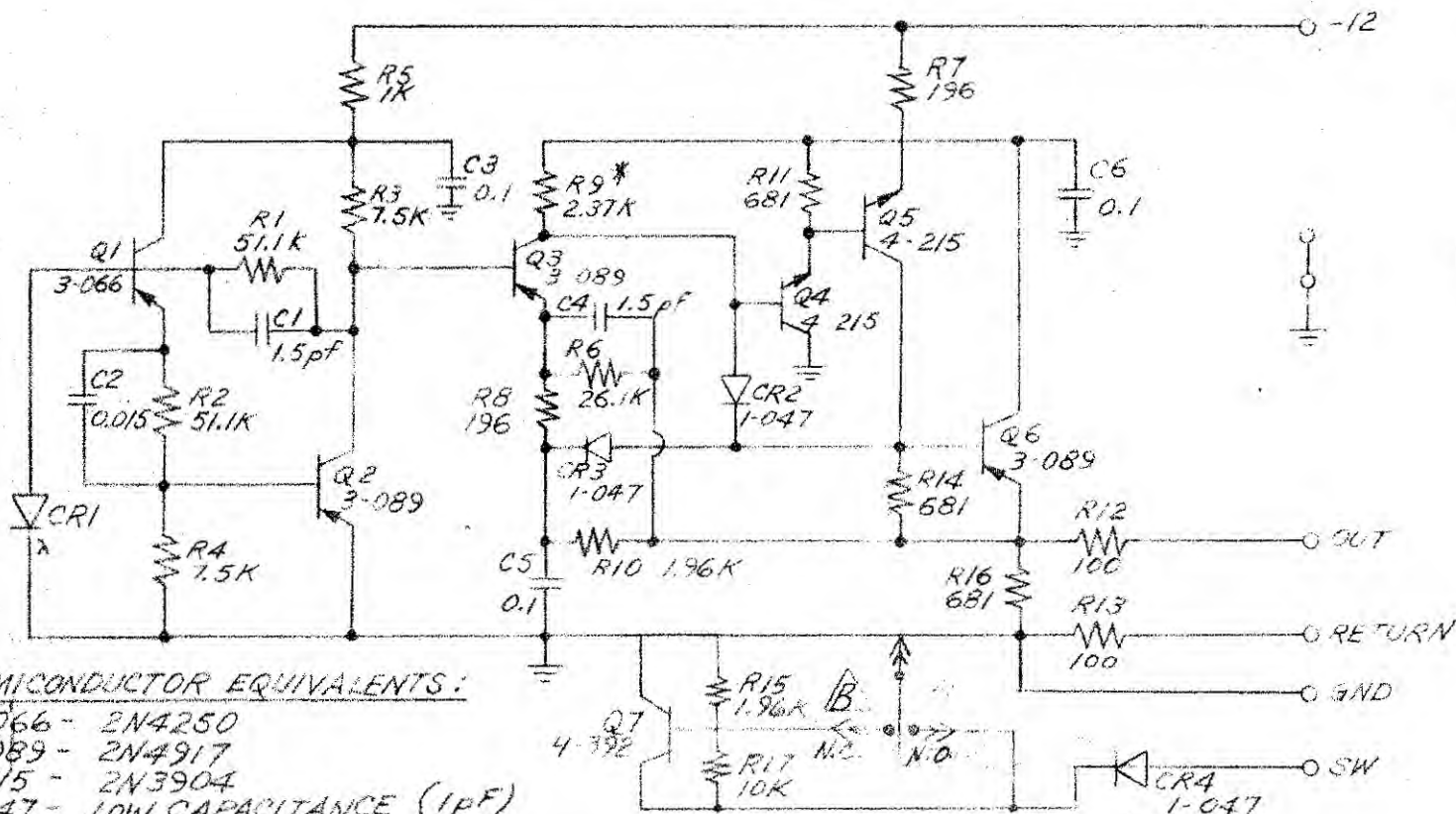
4/2/80

B

REVISED PER LC 40-10466

[Signature]

1-7-81



SEMICONDUCTOR EQUIVALENTS:

3-066 - 2N4250
3-089 - 2N4917
4-215 - 2N3904
1-047 - LOW CAPACITANCE (1PF)
SWITCHING DIODE

ITEM	QTY.	MATERIAL DESCRIPTION	MAT'L PART NO.	MAT'L DWG. NO	MAT'L SPEC.
------	------	----------------------	----------------	---------------	-------------

DO NOT SCALE THIS DRAWING

UNLESS OTHERWISE SPECIFIED,
DIMENSIONS ARE IN INCHES.

TOLERANCES .XX ± .02 .XXX ± .005

SEE CORP. STD. 608

KOLB/BERWICK
DRAWN BY2-27-80
DATE

ENGINEER

L. KOLB

10-30-79

RELEASE TO PROD.

4/2/80

SUPERSEDES DWG

LIGHT PEN BOARD

TITLE

NEXT ASSEMBLY

FINISH

SCALE

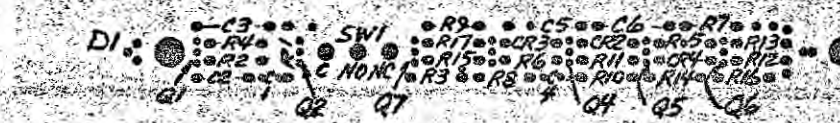
HEWLETT  PACKARD

PART NUMBER 98775-66502

A-98775-66502-4

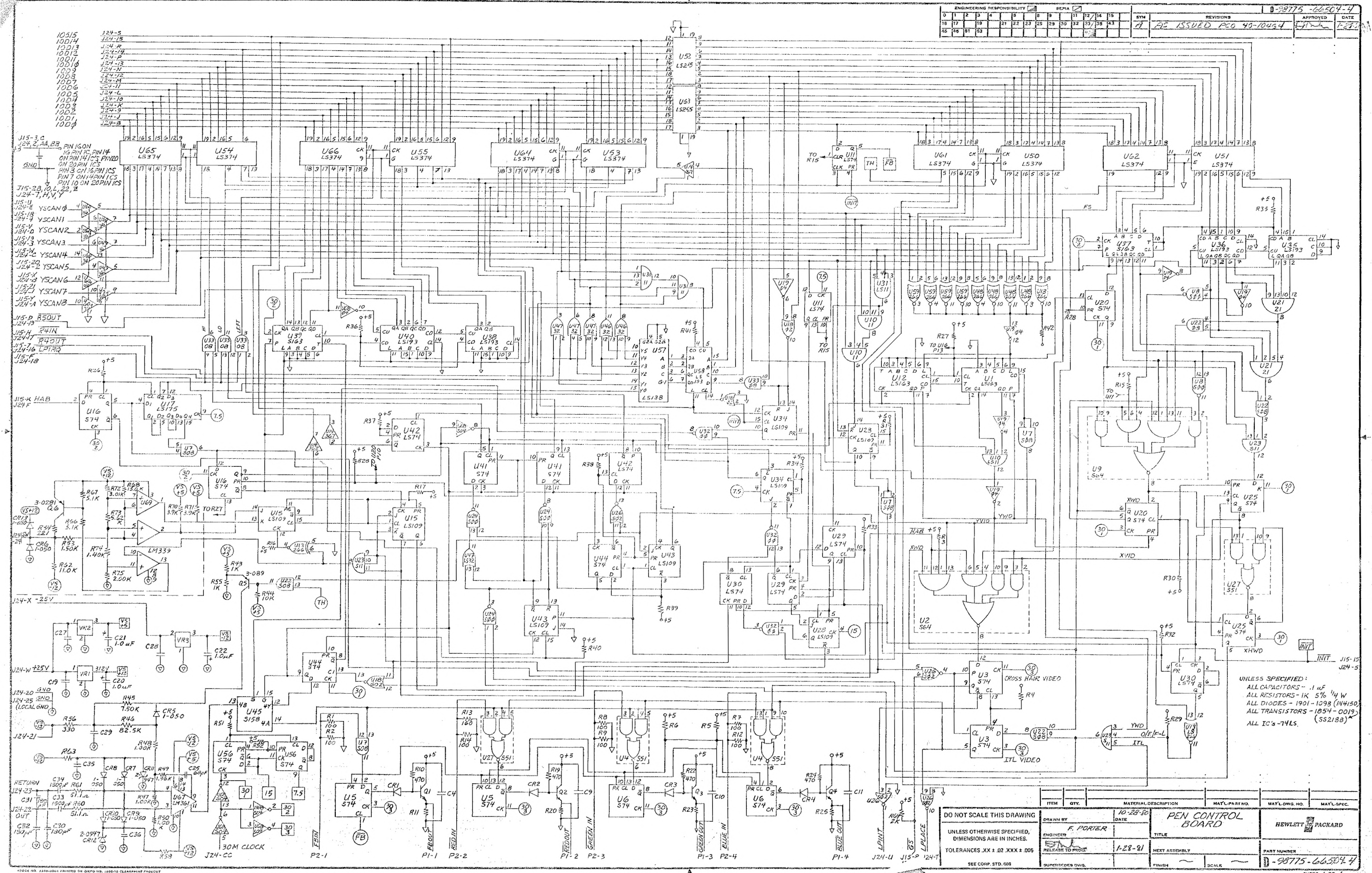
SHEET 1 OF 1

ENGINEERING RESPONSIBILITY																SYN		REVISIONS		APPROVED	DATE
0	1	2	3	4	5	6	7	8	9	10	11	12	13	14	15	C	REVISED E REDRAWN - P.C.D. 40-10446	<i>[Signature]</i>	7-7-81		
16	17	18	19	20	21	22	23	24	25	26	27	28	29	30	31						
32	33	34	35	36	37	38	39	40	41	42	43	44	45	46	47						

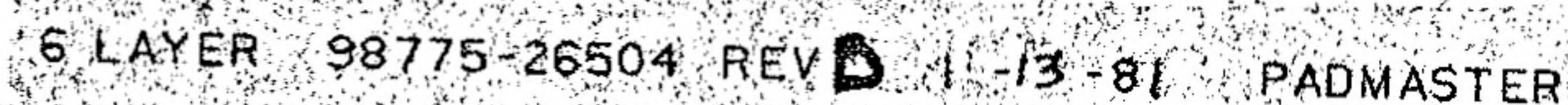


98775-66502 REV. E 03-29-80 4 LAYER CU FOIL PADMASTER SIDE

ITEM	QTY.	MATERIAL DESCRIPTION	MAT'L PART NO.	MAT'L DWG. NO.	MAT'L SPEC.
<div style="display: flex; justify-content: space-between;"> <div style="width: 30%;"> <p>DO NOT SCALE THIS DRAWING</p> <p>UNLESS OTHERWISE SPECIFIED, DIMENSIONS ARE IN INCHES.</p> <p>TOLERANCES .XX ± .02 .XXX ± .005</p> <p>SEE CORP. STD. 608</p> </div> <div style="width: 30%;"> <p>DRAWN BY: LOWELL KOLB</p> <p>ENGINEER: <i>[Signature]</i></p> <p>RELEASE TO PROD: <i>[Signature]</i></p> <p>DATE: 11-16-79</p> <p>1-7-81</p> <p>7-24-80</p> <p>SUPERSEDES DWG.</p> </div> <div style="width: 30%;"> <p>REF LOCATOR</p> <p>TITLE: REF LOCATOR</p> <p>NEXT ASSEMBLY: FULL</p> <p>FINISH: FULL</p> <p>SCALE: FULL</p> </div> <div style="width: 10%;"> <p>HEWLETT PACKARD</p> <p>PART NUMBER: 98775-66502-5</p> </div> </div>					



SYM		REVISIONS	APPROVED	DATE
A		AS ISSUED	<i>[Signature]</i>	1-28-8

FORM NO. 9225-0005 PRINTED ON GPO NO. 1029-10 CLEARPRINT FAREOUT